

Sam Johnson

samjohnsondesign.co.uk



TIN TIN

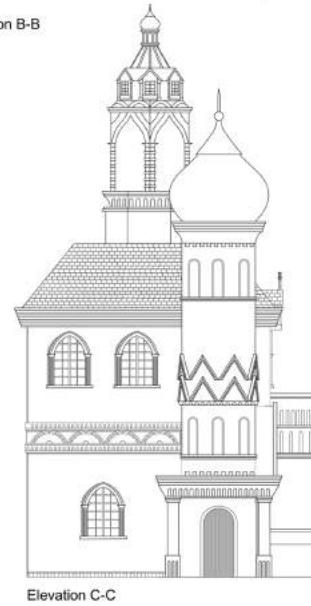
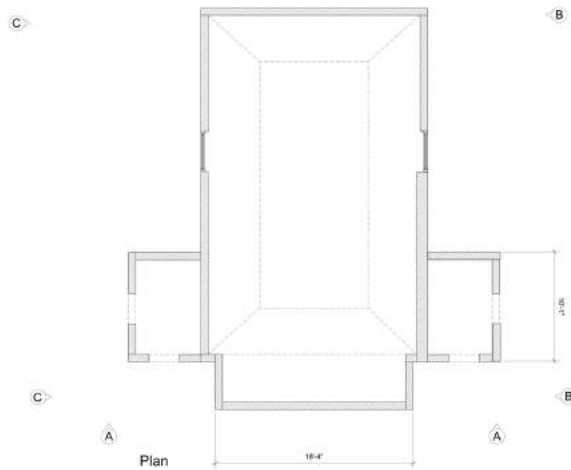
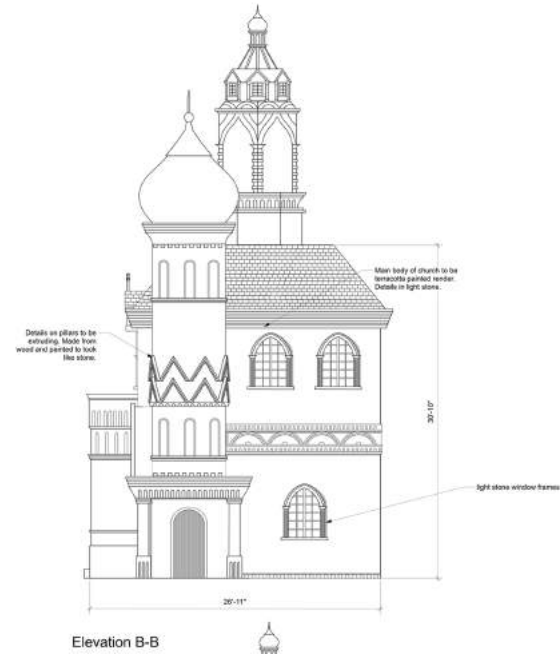
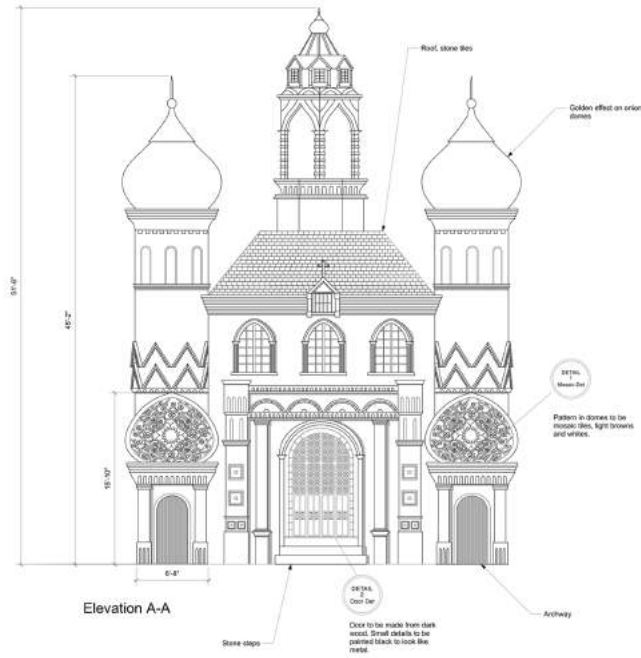
In the Land of the Soviets



Russian Village

Sam Johnson

TIN TIN IN THE LAND OF THE SOVIETS, Church, Elevation, Plan



TIN TIN IN THE LAND OF THE SOVIETS			
Production: TIN TIN	Set: MUSKAT STREET HOME CHURCH	Set No.:	1
Date Required: 18/06/18	Details: ELEVATION PLAN	DWG No.:	5
Production Designer: SAM JOHNSON	Drawn by: SAM JOHNSON	Scale:	1/4" = 1'-0"
Date Drawn: 18/06/18	Date Issued: 18/06/18	Revision:	0
		Author/Designer:	SAM JOHNSON
		Checker:	CELESTE MCDONALD

TIN TIN

In the Land of the Soviets



Russian Village

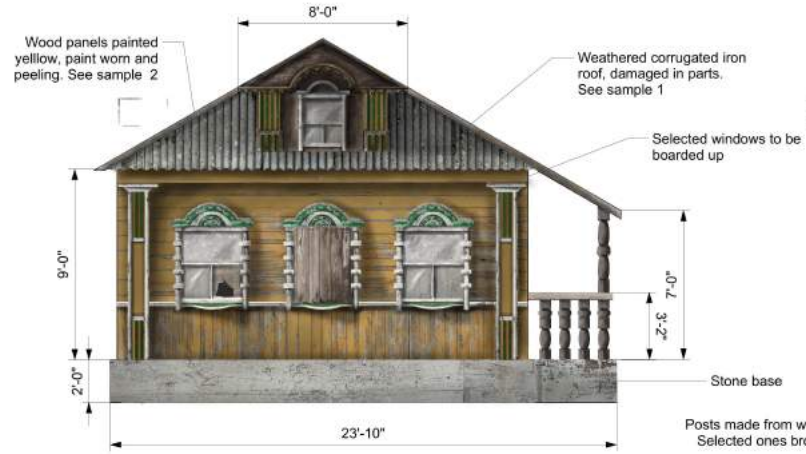
Sam Johnson

TIN TIN IN THE LAND OF THE SOVIETS, House1, Elevation, plan

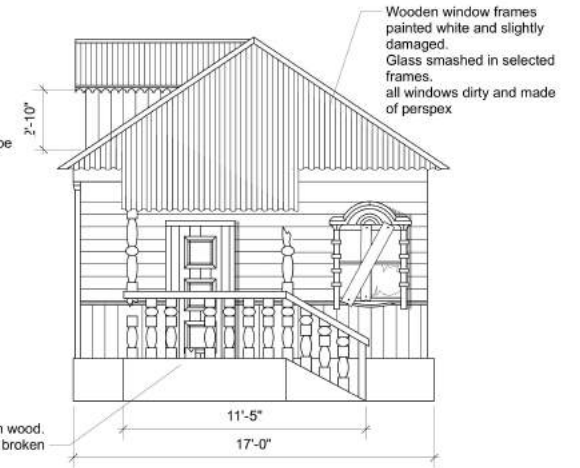
Elevation B-B



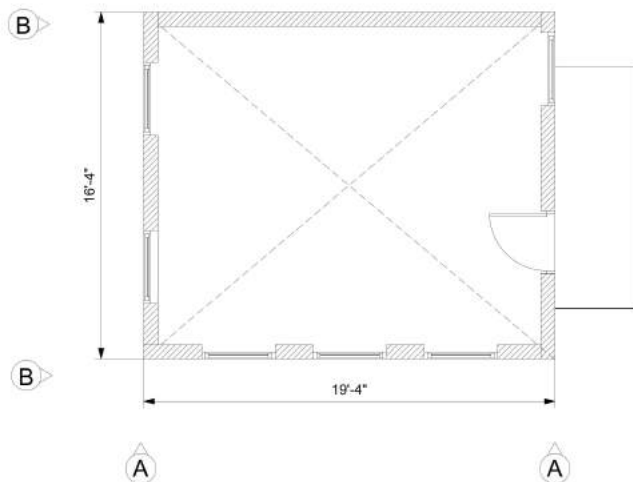
Elevation A-A



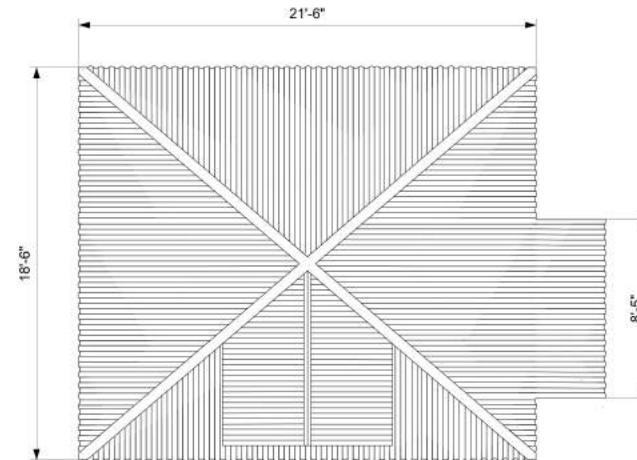
Elevation C-C



Plan



Roof Plan

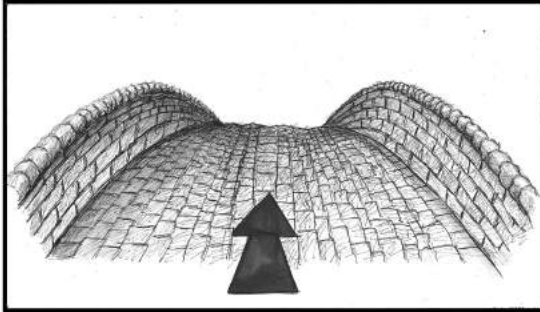


TIN TIN IN THE LAND OF THE SOVIETS			
Production: TIN TIN	Set: RUSSIAN STREET SCENE HOUSE 1	Set No.: 1	
Date Required: 15/04/13	Details: ELEVATION, PLAN	DWG No.: 5	
Production Designer: SAM JOHNSON	Drawn by: SAM JOHNSON	Scale: 1/4"=1'-0"	
Date Drawn: 1/02/2013	Date Issued: 15/04/2013	Revision: 0	Studio/Stage: BARKADDOV EXTERIOR BACKLOT

TIN TIN

IN THE LAND OF THE SOVIETS

1.



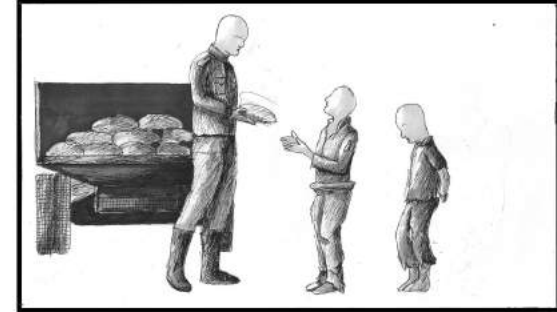
ESTABLISHING SHOT OF TIN TIN AND SNOWY APPROACHING A STONE FOOT BRIDGE

2.



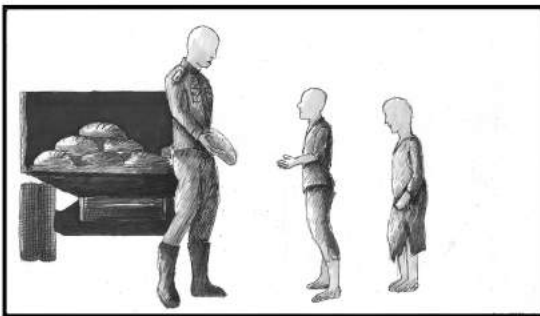
VIEWS OF TIN TIN AND SNOWY COMING OVER THE BROW OF THE BRIDGE REVEALING A VIEW OF A RUNDOWN VILLAGE. IN THE DISTANCE A RUSSIAN OFFICER APPEARS TO BE HANDING OUT BREAD

3.



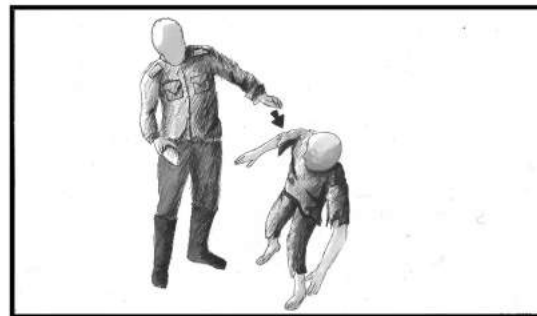
CAMERA ZOOMS IN FOR A MEDIUM SHOT SHOWING A RUSSIAN OFFICIAL HANDING OUT BREAD TO STARVING CHILDREN OF THE VILLAGE THE OFFICIAL MAKES SURE THEY ARE COMMUNIST BEFORE GIVING THEM THE BREAD

4.



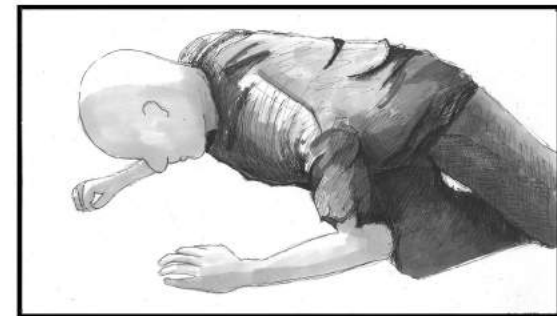
THE OFFICIAL THEN GETS TO A BOY THAT HE DISCOVERS IS NOT A COMMUNIST. HE PULLS THE BREAD AWAY FROM HIM

5.



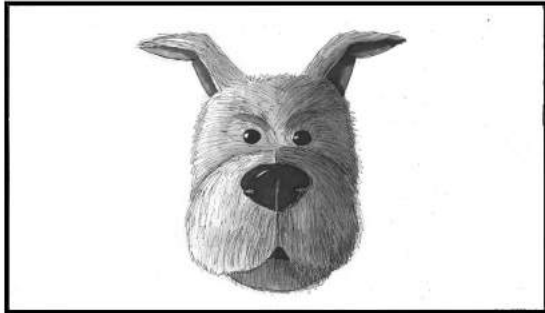
THE CAMERA THEN ZOOMS IN AS HE PUSHES THE BOY TO THE FLOOR

6.



MEDIUM CLOSE-UP SHOWING THE BOY CRAWL AWAY IN PAIN

7.



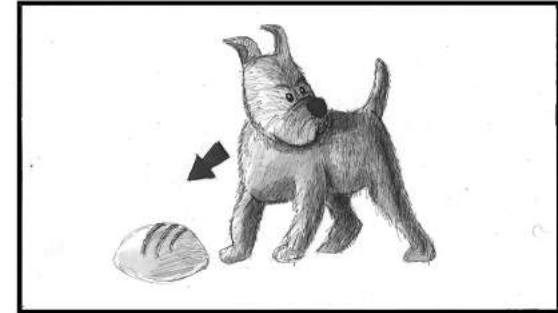
THE CAMERA CUTS TO CU OF SNOWY
LOOKING ANNOYED AT SEEING THE BOY
PUSHED TO THE FLOOR

8.



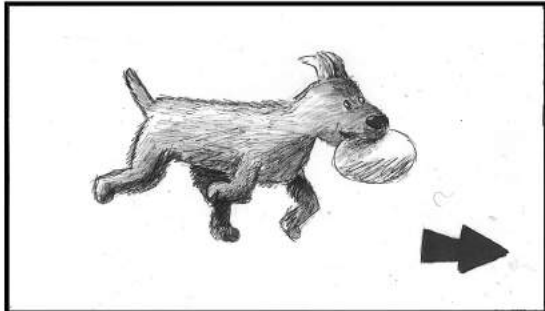
THE CAMERA CUTS BACK TO A WS LOOKING AT THE
TRUCK. THE BOY CRAWLS AWAY OUT OF THE SHOT.
SNOWY COMES IN TO THE SHOT AND JUMPS ON TO
THE TRUCK

9.



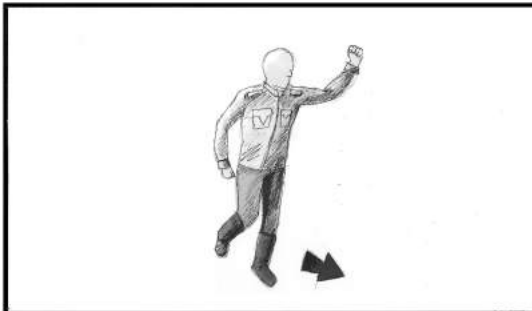
MS SHOWING SNOWY PICKING UP A LOAF OF BREAD

10.



MS OF SNOWY JUMPING DOWN FROM THE TRUCK AND
RUNNING AWAY WITH A LOAF OF BREAD. CAMERA PANS
TO FOLLOW SNOWY RUNNING AWAY

11.



CAMERA PANS BACK TO SHOW A WS OF THE OFFICIAL
RUNNING AFTER SNOWY CAMERA PANS TO FOLLOW HIM

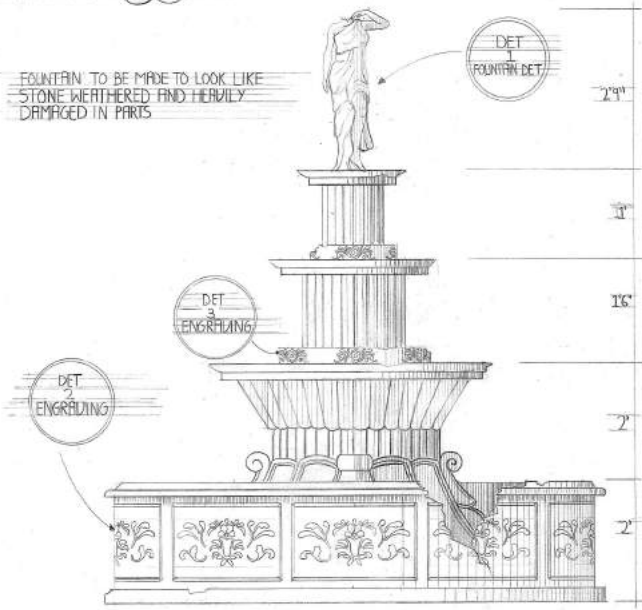
12.



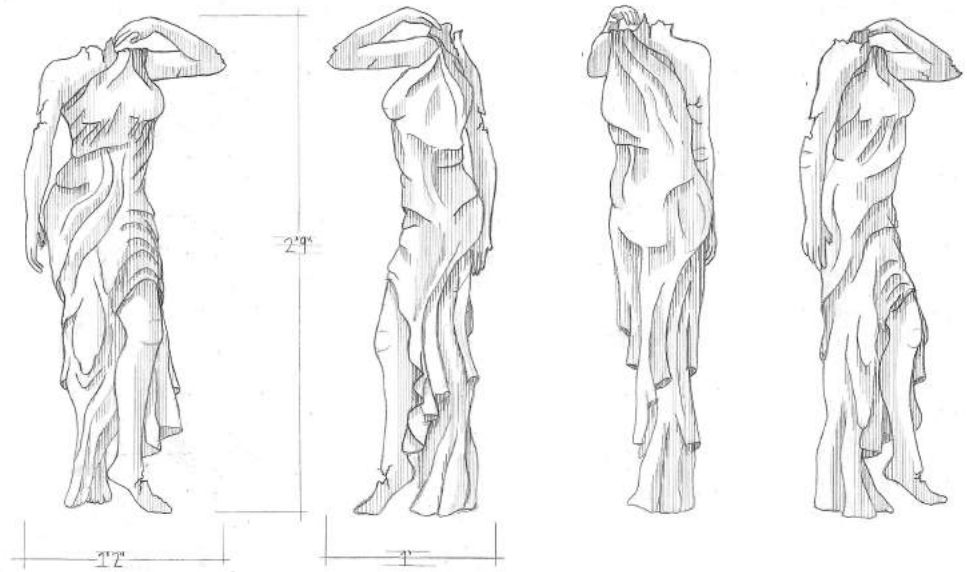
CAMERA CUTS TO A WS SHOWING SNOWY RUNNING
THROUGH THE DOOR OF THE DESTROYED BUILDING

TIN TIN FOUNTAIN, ELEVATION, PLAN, AND SECTION 1/2 IN=FT

ELEVATION (B-B)

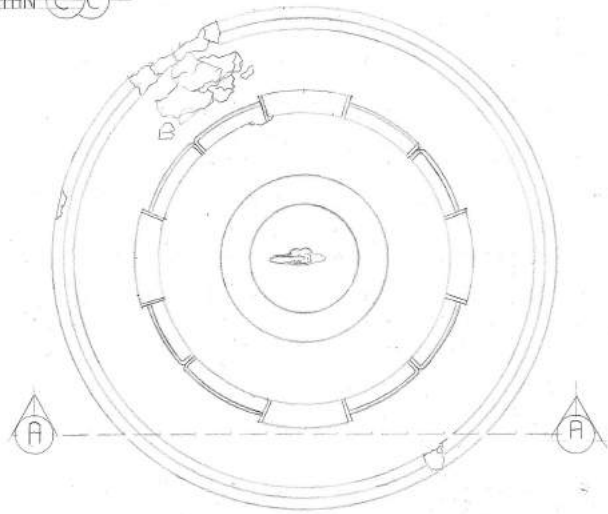


FOUNTAIN DETAIL 3 IN=FT

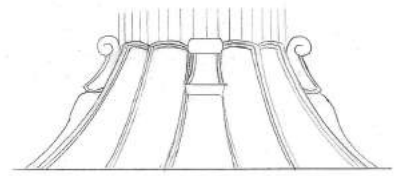


STATUE OF WOMAN TO BE MADE TO LOOK LIKE STONE WEATHERED AND HEAVILY DAMAGED IN PARTS

PLAN (C-C)

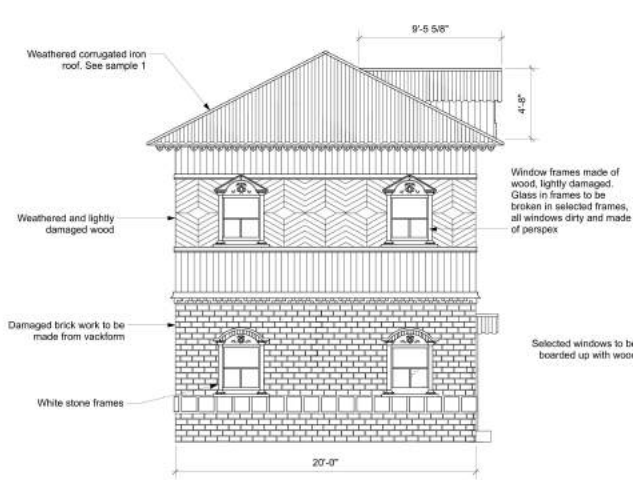


SECTION (A-A)

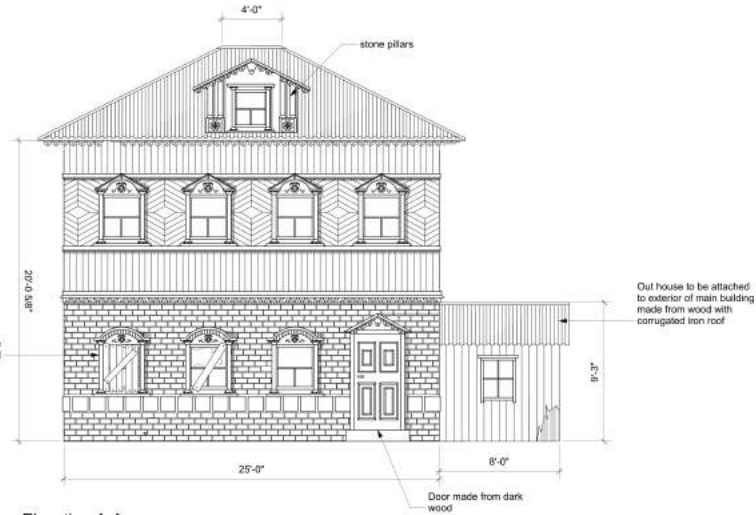


TIN TIN IN THE LAND OF THE SOVIETS			
Production: TIN TIN	Set: FOUNTEN STREET SCENE	Set No.: 1	
Date Required: 15/04/13	Details: ELEVATION, PLAN, SECTION, DETAIL	DWG No.: 6	
Production Designer: SAM JOHNSON	Drawn by: SAM JOHNSON	Scale: 1/2 IN=FT 3 IN=FT	
Date Drawn: 15/03/2013	Date Issued: 15/04/2013	Revision: 0	Studio/Stage: BARBERSHOY EXTERIOR BACKLOT

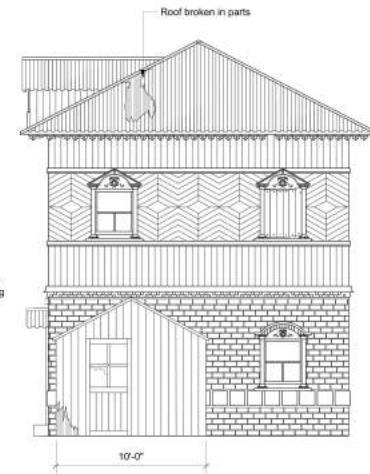
TIN TIN IN THE LAND OF THE SOVIETS, House2, Elevation, plan



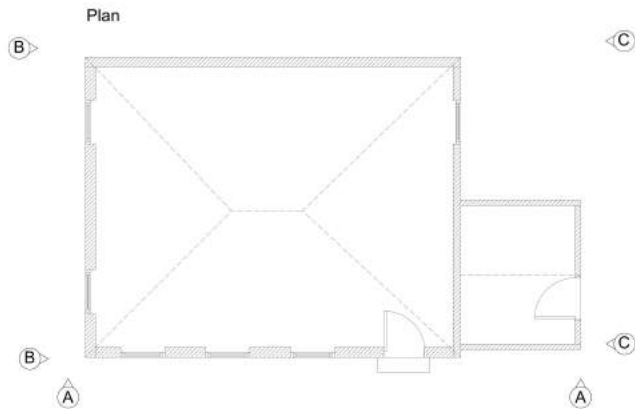
Elevation B-B



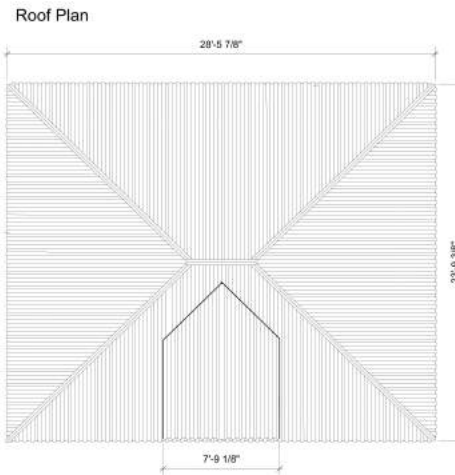
Elevation A-A



Elevation C-C



Plan

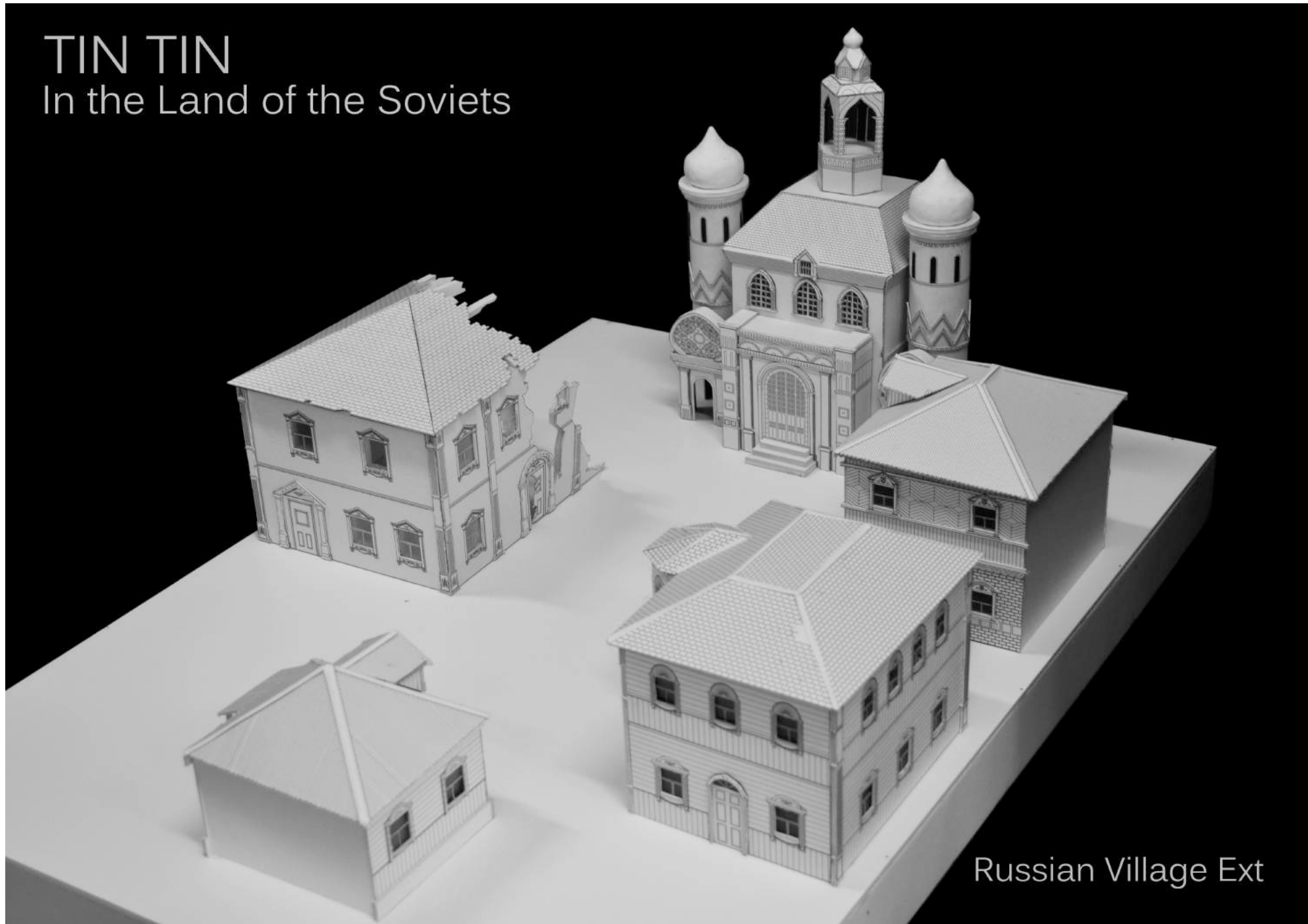


Roof Plan

TIN TIN IN THE LAND OF THE SOVIETS			
Production: TIN TIN	Set: RUSSIAN STREET SCENE HOUSE 2	Set No.: 1	
Date Required: 15/04/13	Details: ELEVATION, PLAN	DWG No.: 5	
Production Designer: SAM JOHNSON	Drawn by: SAM JOHNSON	Scale: 1/4" = 1'-0"	
Date Drawn: 1/02/2013	Date Issued: 15/04/2013	Revision: 0	Studio/Stage: BARANCOV EXTERIOR BACKLOT

TIN TIN

In the Land of the Soviets



Russian Village Ext

TIN TIN

In the Land of the Soviets



Russian Village Ext

Sam Johnson

CC WEEK



Game changer model

Sam Johnson

CC WEEK



Graveyard model

Sam Johnson

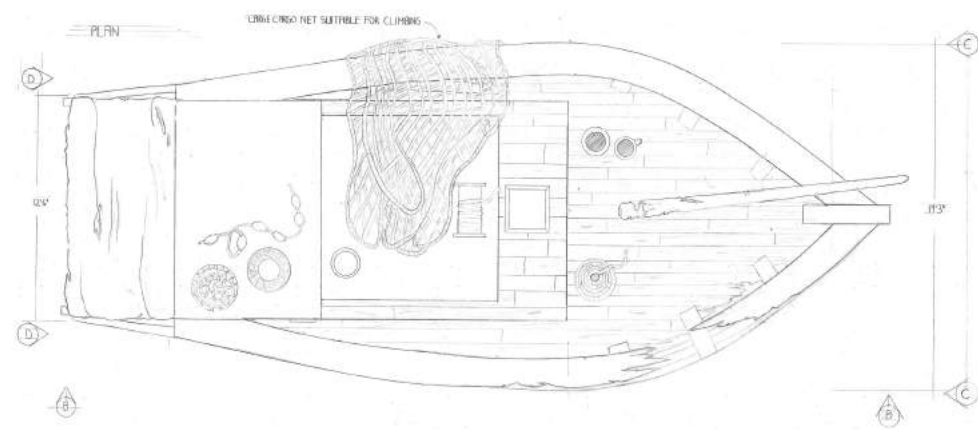
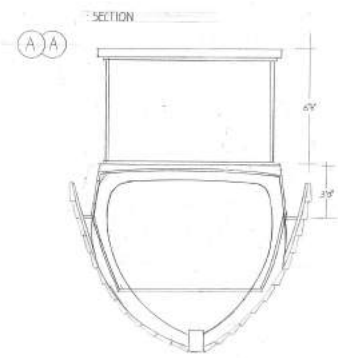
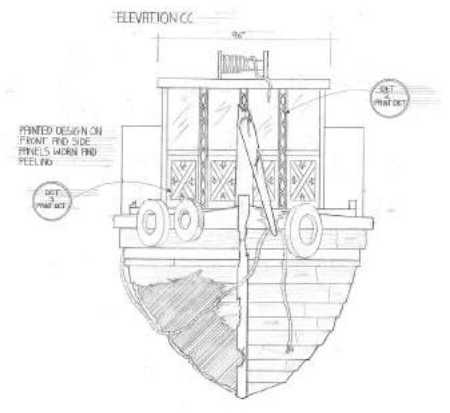
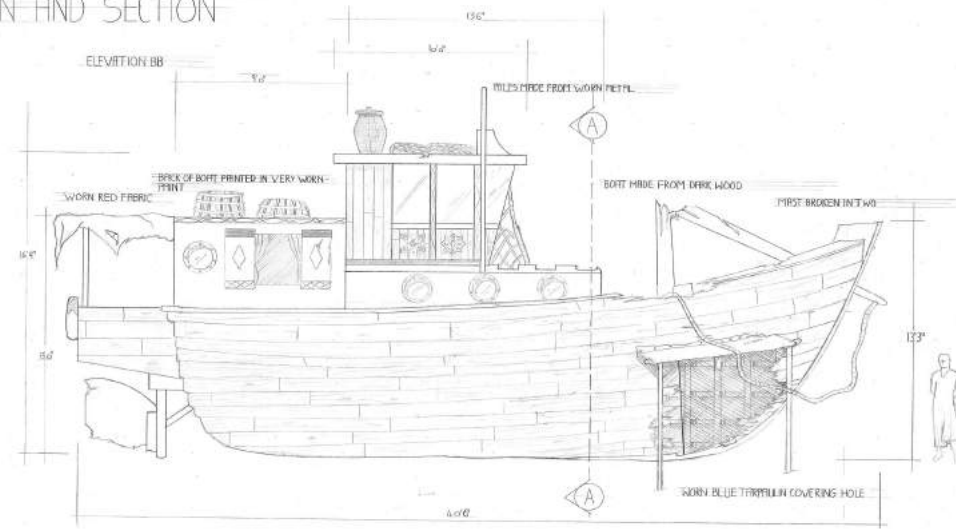
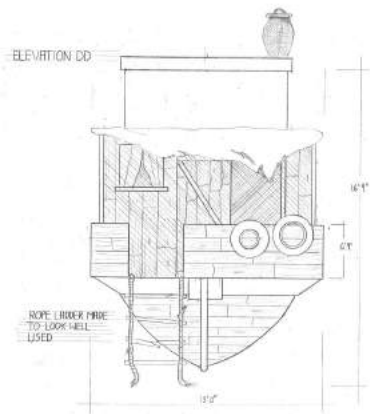
Habibi



Boat Ext

Sam Johnson

HABIBI, EXT. BOAT, ELEVATION, PLAN AND SECTION



habibi			
Production: habibi	Set: Boat Exterior Cutthrough	Set No.:	1
Date Required: 22/01/15	Details: Elevation plan	DWG No.:	1
Production Designer: Sam Johnson	Drawn by: Sam Johnson	Scale:	1/2-in=ft
Date Drawn: 14/01/15	Date Issued: 16/01/15	Revision:	0
		Studio/Stage:	Location

Habibi
Boat Ext



Habibi Boat Ext



Habibi



Galley

Sam Johnson

Habibi




Boat Cabin

Sam Johnson

The wrong mans

FOR EVERY 10 PAYING TABLES,
THE 11th TABLE IS COMPLIMENTARY



Three Hot and Cold Combination Platter
 Braised Crabmeat Soup with Three Treasures
 Roasted Golden Chicken with Crackers
 Braised "Bailing Mushrooms" and Crystal Rolls on Broccoli
 Deep-fried Sliced Fish Thai Style
 Fried Rice with Silver Crabmeat topped with Anchovies
 Double Boiled Lotus Seeds with Red Dates
 Sweet Corn Pancake
 Chinese Tea

RM980.00+ per table of 10 persons

(Price quoted is exclusive of 10% service charge and 6% government tax
 *Not Applicable for Non-residents/Students

www.lhotels.co.uk

DEBIT CARD
DEBIT

5412 3269 2013 4581

VALID FROM 01/09 EXPIRES 01/14
 MR MARAT MILANKOVIC
 VOICE CODE 06 04 24 ACC NO 23103596 BRANCH 4103

card helpline 01632 960987

Authorised signature 4401346890113

3571 631

This card may only be used by the authorised signatory in accordance with the current terms and conditions of use. This card remains the property of the bank when the loss of this card must be reported immediately. If found, this card should be handed in at a branch.

Music Achievement

Presented to
 Phillip Neville Bourne

Congratulations
 on passing the Grade 3 flute exam

Sam Johnson
 Examiner

G. Grant
 Head of board



Berkshire
 Police Department

NO COLD CALLS

NO JUNK MAIL

20 King size

Smoking Kills

Smoking seriously harms you and others around you

20 King size

20 King size

filter cigarettes

POWDER
 FIRE EXTINGUISHER

0.6KG ABC POWDER
 5A 21B C

1 USE UPRIGHT REMOVE SAFETY PIN

2 DIRECT NOZZLE AT BASE OF FIRE FROM AT LEAST 1 METRE

3 SQUEEZE HANDLES TO OPERATE

SUITABLE FOR USE ON LIVE ELECTRICAL EQUIPMENT UP TO 1000V AT A DISTANCE OF 1 METRE

FIRE MAX
HOMESAVE, HIGH WYCOMBE HP12 0UJ

TECHNICAL INFORMATION

- Model FMP600-0.6 ABCB5 Power
- Fire Rating 5A21B C
- Technical approval to EN3-7 except clause 6.1 certified to BS EN3 except clause 6.1 of EN3-7
- Extinguishing medium ABCB5 Power
- Propellant: Nitrogen
- Refill code: ABC0.6-06kg ABCB5 Power
- Test pressure: 27 bar
- Maximum service pressure 17 bar
- operation temperature: -30 to +60
- Do not use out specified temperature range

MAINTENANCE & SERVICE INFORMATION

- This extinguisher must be installed and serviced to BS5306 Part 3 and part 8
- An appointed person should visually check the extinguisher, preferably once every month, for damage and serviceability
- withdraw from service if to tamper seal is missing, if extinguisher is under pressure of under weight 0, or if pressure indicator enters red section
- This extinguisher should be serviced least annually, and discharged tested every 5 years to check the actual functioning to BS5306 part 3 and part 8 by a trained, competent person
- Do not test prior to use
- After any use, the extinguisher must be depressurised and refilled by a competent person not be pierced, dented or in a fire
- the extinguisher must not be operated with the discharge nozzle removed
- Only use genuine extinguishants conformity with manufacturer's

Graphics

Sam Johnson

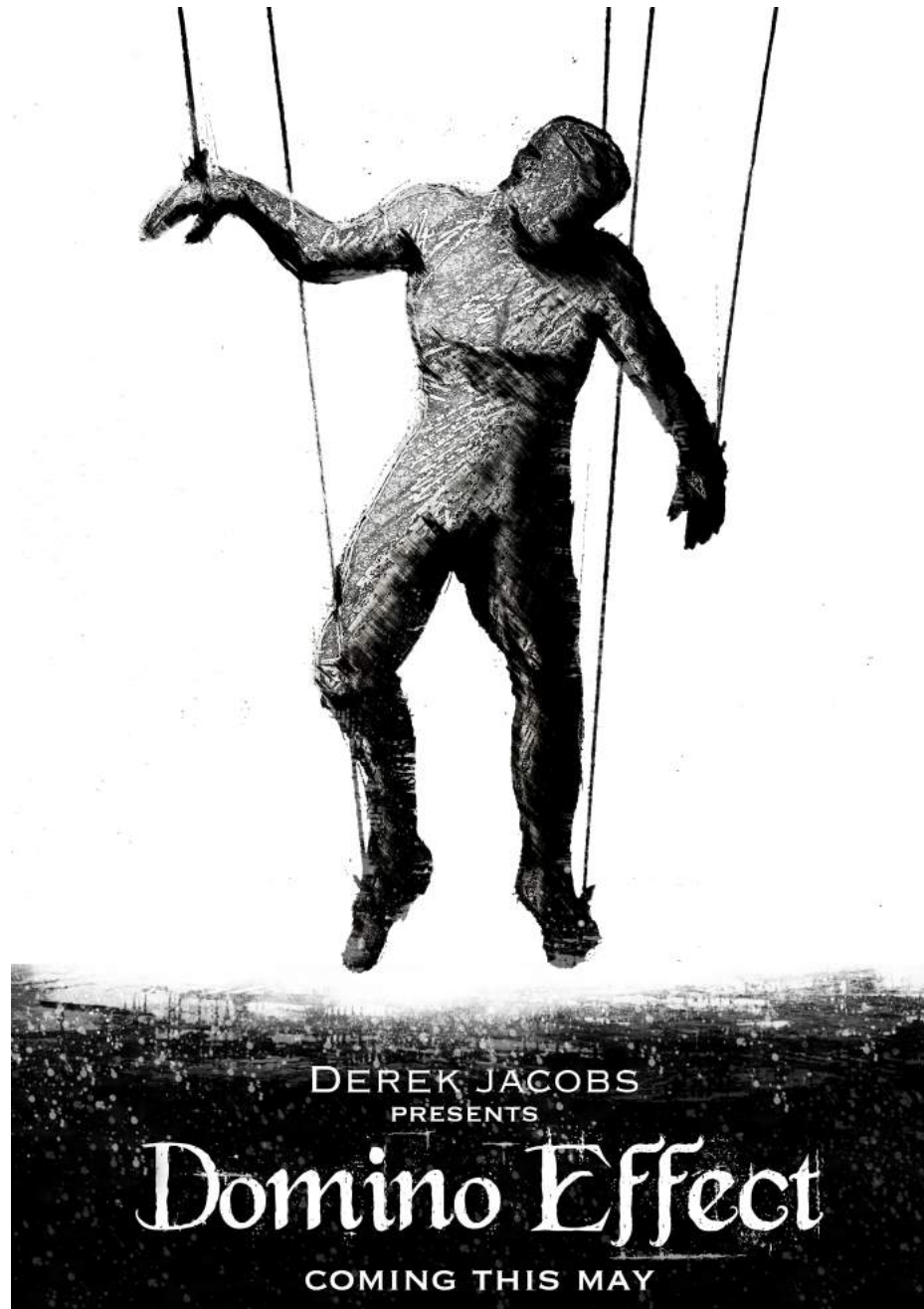
Split



Graphics

Sam Johnson

Split



Theater Poster

Sam Johnson